

BEAM PARK COMMUNITY FORUM

The Beam Park Community Forum is the formal resident involvement structure between the residents of Beam Park, L&Q and Countryside.

The Community Forum oversees the regeneration of the Beam Park by:

- Providing feedback on the regeneration.
- Ensuring there is continued community involvement.
- Encouraging participation from groups currently under-represented.
- Attending quarterly meetings.
- Attending tours, training, sub groups and consultation events for feedback.
- Reviewing literature, communications and messages circulated to the community.

The Community Forum took place on 1st May 2024. A huge thank you to everyone who took the time to attend virtually.

The next Community Forum will be held on 31st July 2024.

MAKE SPACE FOR GIRLS



Are you female and aged 16-24?

We are looking for a young female resident, ideally aged between 16 and 24, to join our Beam Park Community Forum. This role involves representing younger women in the development and supporting the project 'Make Space for Girls'. The project aims to identify and address the barriers that teenage girls and young women face when accessing public spaces like parks. We know there is a lack of facilities which cater to the needs of girls and young women, and safety concerns often prevent them from using parks.

If you're interested in supporting this project, or learning more about it, please reach out to us at [beamparkenquiries@lqgroup.org.uk](mailto:beamparkenquiries@lqgroup.org.uk). We'd love to hear from you!

WHAT'S ON AT BEAM PARK



Summer Carnival Festival

Get ready for our biggest event of the summer: The Beam Park Summer Carnival Festival on Saturday 3rd August. You'll get to enjoy amazing carnival costumes, lively music, and lots of fun activities. There will be a craft workshop where you can make masks and headdresses, plus a mini parade and delicious carnival style food and drinks. We'll share more details in a few weeks' time and you'll need to register on Event Brite. Keep an eye out for updates, and in the meantime 'save the date' in your diaries!

Your Sport

Your Sport the PE Specialists will be back at Beam Park every Monday to Thursday from 9am – 3pm, starting Monday 22 July until Thursday 29 August. Kids can join in on all sports and physical activities. More information on how to register your children for these free sessions will be coming soon.

Newark Youth

Newark Youth will be teaming up with young people and their families at Beam Park over the summer. Stay tuned for more information.

Get in touch

There are lots of ways you can get in touch with us:

You can contact our Customer Service Centre by calling 0300 456 9996 or emailing us at [contact@lqgroup.org.uk](mailto:contact@lqgroup.org.uk).

To discuss a repair, you can reach us at 0300 456 9996. If it's a new repair, you can fill out our online repair form on our website. For emergency repairs posing immediate danger, call the same number.

If you need to speak to us about any non repairs-related issues, to your Neighbourhood Housing Lead Get more involved with us and help shape the services we provide to you. You can find out more about resident involvement opportunities in the 'L&Q community' section of our website.



Beam Stream website

The Beam Stream website is almost complete! In the meantime, please continue to sign up to our mailing list using the QR code to the left. If you have any issues, please email: [BeamParkEnquiries@LQGroup.org.uk](mailto:BeamParkEnquiries@LQGroup.org.uk)



Visitor parking app

PCM have a Virtual Visitor Parking App. All vehicles parked in the marked VP bays must be registered for a valid Virtual Visitor Parking (VVP) parking session.

To download and register for the app, please search for 'Virtual Visitor Parking' in your app store or scan this QR code. Don't forget – you can self-enforce your own allocated parking bay by applying for the use of the PCM self-enforcement app. For more information on how this service can work for you.

Please contact PCM on 01753 512 603 or visit: <https://www.parkingcontrolmanagement.co.uk/contact>



Pound Advice

Pound Advice – a free service offering confidential advice and support with budgeting, debt and benefits for L&Q residents. For more information, call: 020 3475 2221 email: [pound@we-are-digital.co.uk](mailto:pound@we-are-digital.co.uk) or visit: <https://poundadvice.org.uk/contact-us/>

CONTACT THE TEAM TODAY

If you're experiencing maintenance issues with your home:

Private purchasers

Contact Countryside Customer Services on 01277 233 699 or [customerservicespseast@cpplc.com](mailto:customerservicespseast@cpplc.com)

L&Q tenants and leaseholders

Contact L&Q Aftercare team to report any issues with your property on 020 8189 7604 between 8:30am – 5pm (Mon – Fri) or at [lqaftercarelondon@lqgroup.org.uk](mailto:lqaftercarelondon@lqgroup.org.uk)

For out of hours, please call 0300 456 9998

Questions about the new homes or the ongoing construction work

Countryside Marketing Suite, open daily, 10am – 5.30pm 020 3813 9139 or visit [www.beampark.com](http://www.beampark.com)

L&Q Shared Ownership homes 020 8189 7502 or visit [lqhomes.com/beampark](http://lqhomes.com/beampark)

Estate and block management queries

Contact your L&Q Neighbourhood Housing Lead at: [LHousingServiceTeam@lqgroup.org.uk](mailto:LHousingServiceTeam@lqgroup.org.uk) or 0300 456 9998

Caretaking Supervisor, Ray Stares on 07984 602 399

L&Q Energy

Contact L&Q Energy helpdesk about your account [landqenergy@lqgroup.org.uk](mailto:landqenergy@lqgroup.org.uk) or 0333 003 3733

For information on community engagement events and activities

Please contact: [beamparkenquiries@lqgroup.org.uk](mailto:beamparkenquiries@lqgroup.org.uk)

BEAM Stream

Issue Twelve: June 2024



INTRODUCING THE CHAIR OF BEAM PARK COMMUNITY FORUM

Hi Beam Park neighbours, it's Felicia here, your new Chair of Beam Park Community Forum! I'm thrilled you entrusted me with this role, and I'm excited to work together to make Beam Park an even better place to live.

For those who don't know me, I'm a wife, mother of two, and an interior designer. I run a business called FÉLIE home & interiors, offering design services and homeware to beautify any space.

My background also includes degrees in BA Architecture and MA Luxury Brand Management, so feel free to reach out if you need design advice or just want to chat!

But my real passion is building community. In my previous role as Audience Engagement Officer with Havering Changing, I organised events all the time. Get ready for some phenomenal ones coming to Beam Park soon!

Remember, "It takes a village," and our village is Beam Park. Let's work together to make it shine!

BROUGHT TO YOU BY THE BEAMPARK PARTNERSHIP

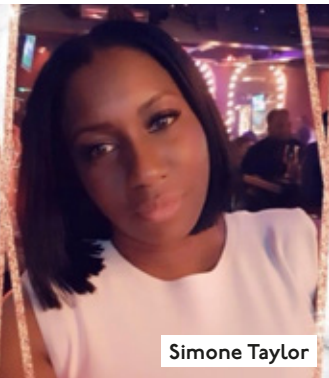




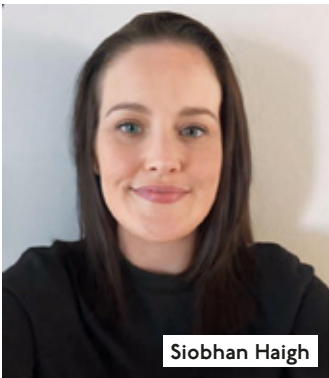
# COMMUNITY UPDATE

## Meet the Community Team

Simone Taylor is the Regeneration Lead for Beam Park. Her role involves engaging with resident and community stakeholder engagement, as well as overseeing the delivery of the Art Strategy. She works closely with Siobhan Haigh, who is the Community Development Lead.



Simone Taylor



Siobhan Haigh

Siobhan's main responsibilities include community development, resident engagement, managing the Community Forum, overseeing the Beam Park Fund, and collaborating with Simone on stakeholder engagement.

Simone and Siobhan will be visiting the development in July to meet with residents and talk about your priorities and concerns. They want to understand how they can support and work with you better.

They don't need to enter your home and can talk to you on the doorstep if preferred. They hope you will chat with them but if you would prefer not to have a visit, please let us know by emailing [BeamParkEnquiries@lqgroup.org.uk](mailto:BeamParkEnquiries@lqgroup.org.uk).

## Welcome to our new community cabin

We've just moved into our new Community Cabin. It's on the grass area opposite the L&Q Sales & Marketing Suite. The cabin will be a community space where we can meet with residents and hold small events like coffee mornings and 'meet your neighbour' gatherings. Keep an eye out for more information on upcoming events at the cabin.

Can you help us? We want to make the cabin a welcoming and safe space for everyone, so we're looking for donations of soft furnishings (like chairs and rugs), toys, and books. If you have any of these items to donate, please get in touch at [BeamParkEnquiries@lqgroup.org.uk](mailto:BeamParkEnquiries@lqgroup.org.uk).

## Opening 2025 with exciting resident-driven spaces

Hopefully, you've spotted the new Beam Park Community Hub and Multi Faith Centre that's just been built.



Community Hub and Multi Faith Centre

Located on the corner of New Road and Thames Avenue, it's the first community space at Beam Park, and it's pretty impressive at around 800sqm. Right now, it's built to shell and core and it's set to officially open in 2025 once we've selected an operator(s).

Last year, we asked residents what they'd like to see in the centre, and some of the ideas include a Community Café, a multi-function studio space, meeting rooms and multi faith space.



The new Community Cabin



## COMPLAINTS

We'll always aim to deliver a service that you're happy with, but if this doesn't happen, we have a formal complaints process you can use. To find out more, visit [www.lqgroup.org.uk/contact-us](http://www.lqgroup.org.uk/contact-us) or call **0300 456 9996** and we'll do our best to put things right.

## Simple Life London!

Looking for a stunning apartment from a landlord you can trust? The answers simple...

Simple Life London is a private rental landlord, offering high-quality, professionally managed apartments for rent.

Simple Life London has neighbourhoods across London including four buildings at Beam Park. Offering 1-3 bedroom fully furnished apartments benefitting from large balconies, 24hr emergency customer care, resident mobile app, parking space rental and pet friendly apartments.

You can also find the Simple Life in Acton, Barking, Royal Albert Dock, Waltham Cross, Enfield and Walthamstow.

Refer a friend, family member, or acquaintance to move into a Simple Life home across the UK and get a £100 Love2Shop voucher. T&Cs apply.

Visit [www.simplelifelondon.co.uk](http://www.simplelifelondon.co.uk) or [www.simplelifelifehomes.co.uk](http://www.simplelifelifehomes.co.uk) to find out more.



# ESTATE MANAGEMENT UPDATE

## Introducing Aaron Lee – Neighbourhood Housing Lead

Sadia Akram is currently on maternity leave and won't be available for contact. If you have any questions or issues, please reach out to Aaron. You can find his contact details on the Contact the Team page.

We've added an extra caretaker at Beam Park to help with litter picking and other general duties. Since Beam Park is located near a main road and motorway, litter can build up quickly, but with an additional member of staff, we hope to see an improvement.

## Bins

I've been told of a few concerns about fly tipping and rubbish bags being left on the floors of the bin stores, even when the bins aren't full. Please be aware that this can attract pests, and is a big fire risk.

If you have bulky items to get rid of, please take them to a local recycling centre yourself or arrange a collection through Havering Council or Barking & Dagenham Council. Please note there may be a cost for this. If we have to organise the removal of bulky items from the bin store, it'll impact your service charges because of the cost incurred. For more details on getting rid of bulky items, please contact:

Havering Council: 01708 432563

Barking & Dagenham Council: 020 8215 3000



Aaron Lee

# LONDON LIVING RENT

## Do you have a friend or family member who might be interested in London Living Rent?

Funded by the Mayor of London, London Living Rent is a Government-backed scheme that enables you to increase your savings by renting at a discounted rate than you would expect to pay for a similar property on the open market. This helps you to save additional money each month, which can go towards buying a home through Shared Ownership.



L&Q have a wide range of London Living Rent homes available across the Capital. To check the full London Living Rent criteria and what homes are available please visit: [lqhomes.com/LLR](http://lqhomes.com/LLR)

# CONSTRUCTION UPDATE

## Phase 1

All homes in Phase 1 are now finished and fully occupied. The school being built on-site is set to be finished this year and will be open in September 2025. The new medical centre, which opened in spring 2024, is now offering healthcare services to all residents.

## Phase 2

Phase 2 covers both sides of the river, and all homes are expected

to be finished by winter 2024. The new park will open this summer, giving residents a chance to enjoy it during the warm weather.

## Phase 3 (B)

Phase 3 is planned to provide a total of 362 homes. Construction is set to start in summer 2025.

## Phases 4 & 5 (F&G)

Phase 4 and 5 have secured initial approval, and building will start once Phase 3 is in

progress and we have received detailed permission.

## Phase 6 (C)

Building work for Phase 6 began in autumn 2023, aiming to finish by winter 2027.

## Phases 7 & 8 (D&E)

Phase 7 will add more green areas, including a park, and amenities such as shops, making the community an even nicer place to live.



## ENERGY QUERIES

The Energy Centre servicing residents living in the London Borough of Havering is now managed by L&Q Energy.



If you have any questions about heating, hot water or notice an issue with your heat interface units, please get in touch with L&Q Energy's (LQE) Customer Customer Contact Centre Team on **0333 003 3733**.

For less urgent matters, please email L&Q Energy at: [l&qenergy@lqgroup.org.uk](mailto:l&qenergy@lqgroup.org.uk).



## Do you have a friend interested in getting on the property ladder?

When you refer a friend to us, you'll receive **£500 in gift vouchers** as a thank you. Your friend will also receive **£500 in vouchers** to make their new home even more special.

For more information visit:  
[lqhomes.com/refer](http://lqhomes.com/refer)

[lqhomes.com/beamark](http://lqhomes.com/beamark)

Terms and Conditions apply. Speak to a member of the sales team for more information.

## REPORT A REPAIR

Do you have work that needs doing in your home?



Know what repairs you are responsible for, and which L&Q will carry out - scan the QR code below to find out more.

For emergencies and to follow up on problems you have already told us about, please call us on **0300 456 9996**.

You can also report new, non-urgent repairs on our website at [www.lqgroup.org.uk](http://www.lqgroup.org.uk).



## Have your say

Got something you want to see included in the next newsletter? Email us at [beamparkenquiries@lqgroup.org.uk](mailto:beamparkenquiries@lqgroup.org.uk) and it might just make it into the next edition!

